


The first known British woman to undergo medical transition.

WE HAVE ALWAYS EXISTED 

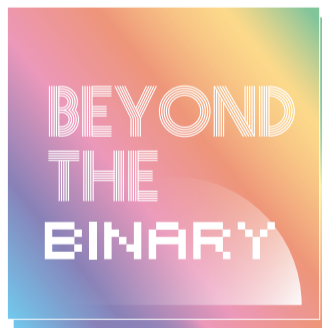
MAA
IS

TRANS HAPPINESS IS REAL

ΔΙΟΦΑΝΤΟΣ ΚΙΑ
DIOPHANTOS KIA
B. HERAIS, HE WAS THOUGHT TO A
GIRL AT BIRTH, AND LATER DISCOVERED
DISCOVERED THAT HE HAD PENIS
AND TESTICLES. AFTER HE LIVED
HIS LIFE AS A MAN, HE LIVED
MILITARY + INHERITING THE
PROPERTY. HIS HUSBAND
-DIOPOF ICVLYS XXXII IC

GENDER

TRANS HAPPINESS IS REAL



Gender Sexuality Power

Special Exhibition
and Events Programme

June 2021 – March 2022
Pitt Rivers Museum, University of Oxford

 @BeyondBinaryPRM #PittBeyondBinary



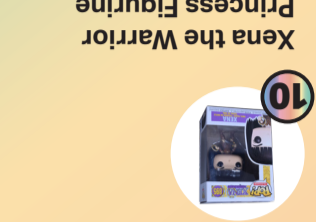
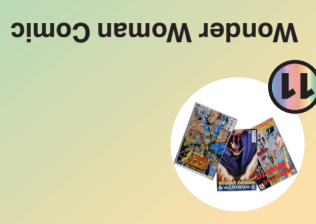
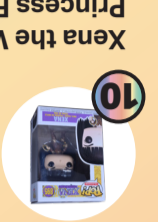
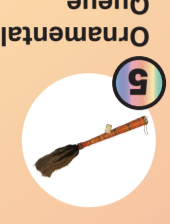
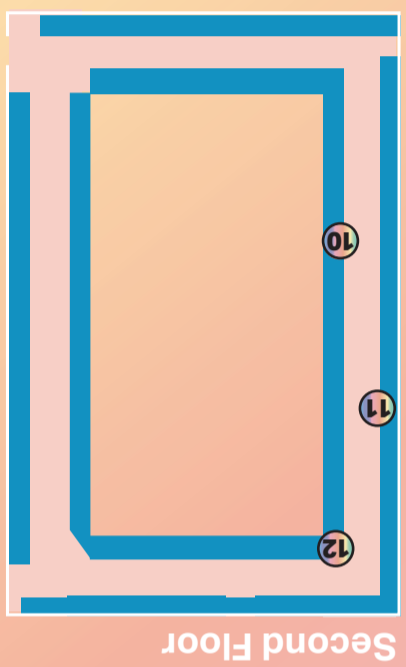
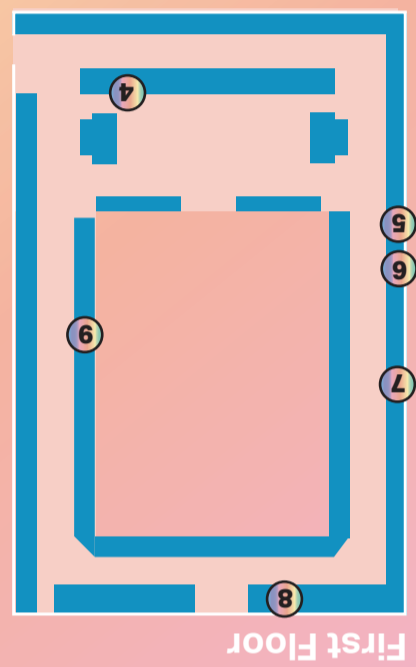
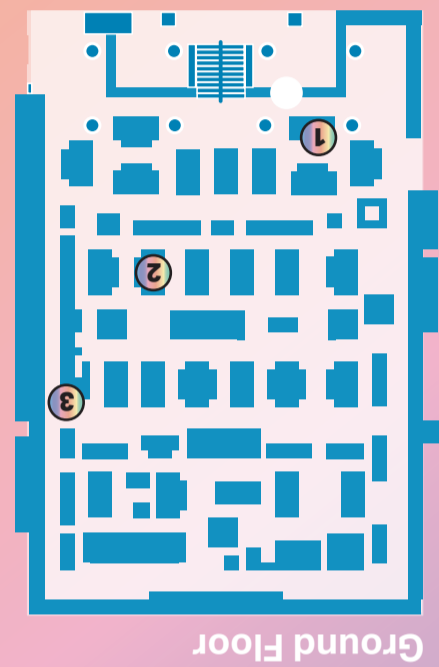
Has this object trail or the exhibition sparked any thoughts? Leave a comment in the exhibition space: [Tweet @PittBeyondBinary](https://twitter.com/PittBeyondBinary) Text 07758348397

This co-curated trail of object interventions highlights items with queer origins, that can be read as queer, and that can facilitate the sharing of queer stories. The Pitt Rivers Museum is committed to standing as an ally with LGBTQ+ communities and creating space for self-representation. This trail and Special Exhibition is about putting the voices of LGBTQ+ communities at the heart of the museum, and connecting their voices to you.

Queering and Questioning Collections and Displays at the Pitt Rivers Museum

Uncover items chosen by our community partners that share something about LGBTQ+ histories, identities and lived-experiences, connecting themes and narratives from our current Special Exhibition. How do you use objects to express and explore your identity?

OBJECT TRAIL



Co-curation and Self-representation

This is an experimental exhibition developed with members from LGBTQ+ communities to provide a space for self-representation and to challenge dominant narratives often found in museums and other public spaces. This means the themes and content were chosen with, and by, a broad range of people; from community curators - UK based partners who chose new items to add to the collections, and helped select, research and write about existing material – through to international artists, activists and scholars who have written text, lent, donated and created new works. We wanted to prioritise the lived-experiences of the LGBTIQ+ communities (their stories, experiences, hopes and critiques).

The exhibition has been shaped as a space to explore new ways to mobilise the museum's collections to tell socially relevant and often difficult stories. Thank you to everyone who has brought this exhibition to life.

What are binaries?

Binaries are two opposite, or mutually exclusive terms such as on/off, good/evil. In this exhibition, we are looking beyond the binaries of gender, sexuality and power, and celebrating the vibrant and thriving spaces in-between. We are looking beyond: male/female; gay/straight; victim/victor.

Find out more about the Beyond the Binary project and exhibition online: prm.ox.ac.uk/beyond-the-binary



Special Exhibition and Events Programme

This exhibition is about queer lived-experiences, putting the voices of LGBTQ+ communities at the heart, and connecting their voices to you. The material selected has queer origins, can be read as queer, or can facilitate the sharing of queer stories. All are welcome in this space and are invited to reflect with kindness and openness. Our aim is that all visitors – however they might identify – can understand humanity better as a result of this exhibition.

We celebrate the strength and agency of LGBTQ+ communities in challenging societal binaries around gender, sexuality, power dynamics and more. We offer alternative understandings of museum items, highlighting human histories that have been underrepresented and excluded as a result of intolerance and oppression. We hope this exhibition uncovers and questions binaries or fixed oppositions that have been imposed on society and how they affect people's lives and identities.

JULY EVENTS

- 1 July, 8pm
Leitis in Waiting:
Film Screening and Q&A
- 14 July, 11am–12 noon
Beyond the Binary Quick-Fire
questions and answers with
Jozie Kettle (Project Curator), and
Andy McLellan (Head of Public
Engagement and Programming)
- 19 July, 6pm
**Natives Inspired: Activism and
Empowerment in the Arts**
- 21 July, 5–6.30pm
**Ubuntu: Defending a humanity
of difference**
- 24 July, 11am
**Drag Queen Story Corner
with Asifa Lahore**

ACCESSIBLE EXHIBITION OPENINGS

- The below events will take place in person at the Museum.
- Weekend Exhibition Quiet Hour:**
Last Saturday of the month
31 July 2021 to 26 February 2022, 1–2pm
 - Mid-Week Exhibition Quiet Hours**
29 September 2021, 5–6pm
12 January 2022, 5–6pm
 - Audio Described Exhibition Tours**
These tours will happen in person, at the museum. The 27 November tour will also be broadcast via Facebook live.
31 July 2021, 1–2pm
27 Nov 2021, 1–2pm
26 Feb 2022, 1–2pm

PRE-LAUNCH EVENT

19 May, 5–6.30pm
**Access All Areas: Disability and the
LGBTIQ+ Community in Arts &
Heritage Spaces**

OPENING WEEK ACTIVITIES

- 2 June, 7.30–9pm
Takatāpui & Queer Pasifika:
Representation and Decolonisation
in Museums and Galleries
- 4 June, 10–11am
Archiving talk with Stefan Dickers
- 5 June, 10–11am
Beyond the Binary Exhibition Talks
- 5 June, 11am–12 noon
**WORKSHOP: Supporting LGBTQ+
Visibility with the Kite Trust**
- 5 June, 1–2pm
**Beyond the Binary Gallery
Intervention Tours:
Queering the Galleries**
- 5 June, 2.30–4.30pm
**Zine Workshop With My Normal,
Trans Happiness is Real and
Common Books**
- 6 June, 10–11am
Family Friendly Clay Workshop

All events are hosted online unless otherwise stated. Keep up to date on Beyond the Binary events at prm.ox.ac.uk/whatson

[@BeyondBinaryPRM](https://twitter.com/BeyondBinaryPRM) #PittBeyondBinary

